

Mesopic strophes

22 November 2025 – 20 December 2025

Mania Godarzani Bakhtiari, Eli Coplan, Danae Io,
Louis Scherfig, Peng Zuqiang, Cecilia Bjartmar Hylta

Organised by Leonardo Orion Dal Colle

The exhibition will be on view by appointment
at Beau Travail and Cues from 29/11 till 20/12

Beau Travail is open every Saturday
from 1PM to 4PM

BEAU TRAVAIL

Meso
Compound
sensssssssss-cored
Coral, line, barrier

A quest to, or, is it to distinguish axes chopping leaves amidst rain beading through the sudden shift in temperature you may observe whilst the constellation populating the celestial of that darkness which everything from floating dorsal fins to refrigerating channels succumbing to diagonal cuts desecrating the horizontal interruption of sight and lungs.

Pulling a silver a zinc coated hook, a revolving door, combination bonding at the interluding jump, plastic shot, of fast-paced printed interlocking metallic jets, gaudy ink infusion, break, snatch, press.

Breath.

A kitchen' scene.

Diurnal variation, veering, soaking through pavements, ceilings, gasping at window panes, alarming, one, two, three compartments. Wet soil, intermission, the main portal banking tolling orifice, Sophia, separated by ten meters of asphalt, birches, benches, meandering passages or clues of a buoyant path.

Red lights may distinctly align to suffused asterism, at their heightening, encroaching infrastructures, tingling through voiding elements which succumb to dust, terrestrial or urban, ante: the bondage of rhythmically fractured screens and loops aggressively steer through pectoral machines cables powering rancid sweat thunders. ~~Blocker,~~ lapsing green-carpeted rolls of matching, flipping coins, breeding numbers through-triangular pixels.

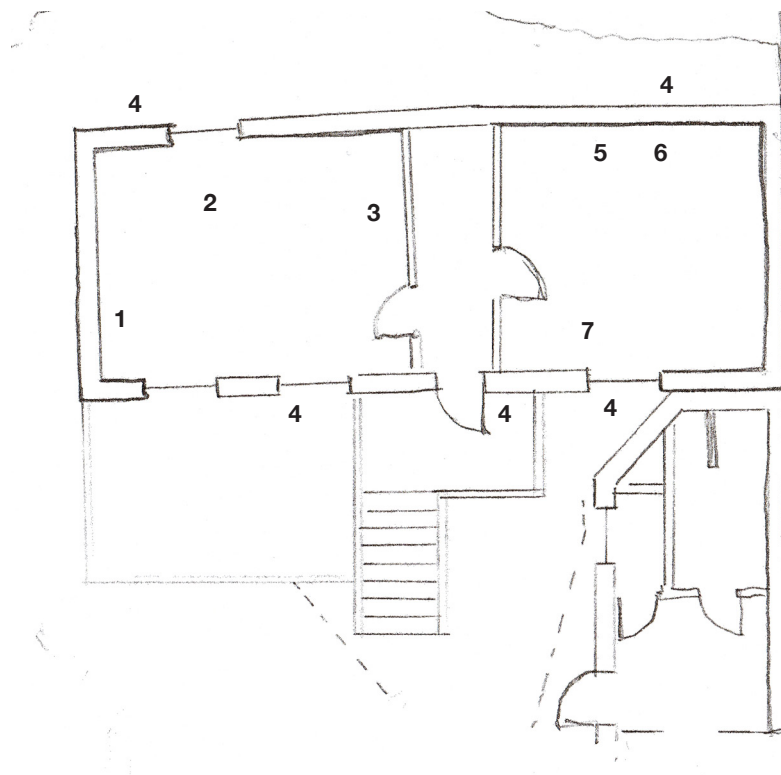
~~A flying shade of orange peel burning gold, trembling ash leaking, leaking superior-pardoning kindred-ness, barricades offering safety to hands manicuring a floating reflection over burning minutes of smoke. Could you contain a sporadic action in a tray, boiserie shielding vampiric urination.~~

~~Fuck your conversational attitude, syntactic paralysis a given?~~

~~At the altitude of cones of fossilised coccoliths and foraminifera, sheer white acid-fabric sheets appears to be veiling a steady walk, the view, pointy, formulated at the threading rhythm of candles burning in the shadow brood and noon lightening, the sunsets shuttering countering recordings of camera lenses pointing at virgin nightfalls-parades, the chores, the chores.~~

~~Was it midday or midnight?~~

~~Was it a blizzard,
was it a safari?~~



1. Danae Io
Spool, 2025
 16mm film, no sound
 1:20 minutes

2. Cecilia Bjartmar Hylta
Untitled, 2025
 Dust, silicone
 46x20x16cm

3. Eli Coplan
Room Temperature, 2025
 Temperature sensitive liquid
 crystal sheet (20–25° C),
 aluminum, wood
 30.48 × 30.48 cm

4. Eli Coplan
Crickets, 2023
 Light sensitive electronic
 crickets
 5 parts;
 each 3.81 × 5.72 × 2.54 cm

5. Peng Zuqiang
Traitor, Corroded, #7 (2025)
 C-print
 28 x 38 cm
 31 x 42 cm (framed)

6. Peng Zuqiang
Traitor, Corroded, #8 (2025)
 C-print
 28 x 38 cm
 31 x 42 cm (framed)

7. Mania Godarzani-Bakhtiari
4/4 Impl., 2025
 video
 5:05 min



Meso
Compound
sensssssssss-cored-
Goral, line, barrier-

A-quest to, or, is it to distinguish axes chopping leaves amidst rain beading through-
the sudden shift in temperature you may observe whilst the constellation populating-
the celestial of that darkness which everything from floating dorsal fins to refrigerating-
channels succumbing to diagonal cuts desecrating the horizontal interruption of sight-
and lungs-

Pulling a silver a zinc coated hook, a revolving door, combination bonding at the-
interluding jump, plastic shot, of fast-paced printed interlocking metallic jets, gaudy ink
infusion, break, snatch, press-

Breath-

A kitchen' scene-

Diurnal variation, veering, soaking through pavements, ceilings, gasping at window-
panes, alarming, one, two, three compartments. Wet soil, intermission, the main portal
banking tolling orifice, Sophia, separated by ten meters of asphalt, birches, benches,-
meandering passages or clues of a buoyant path.

Red lights may distinctly align to suffused asterism, at their heightening, encroaching-
infrastructures, tingling through voiding elements which succumb to dust, terrestrial-
or urban, ante: the bondage of rhythmically fractured screens and loops aggressively-
steer through pectoral machines cables powering rancid sweat thunders. Blocker,
lapsing green carpeted rolls of matching, flipping coins, breeding numbers through
triangular pixels.

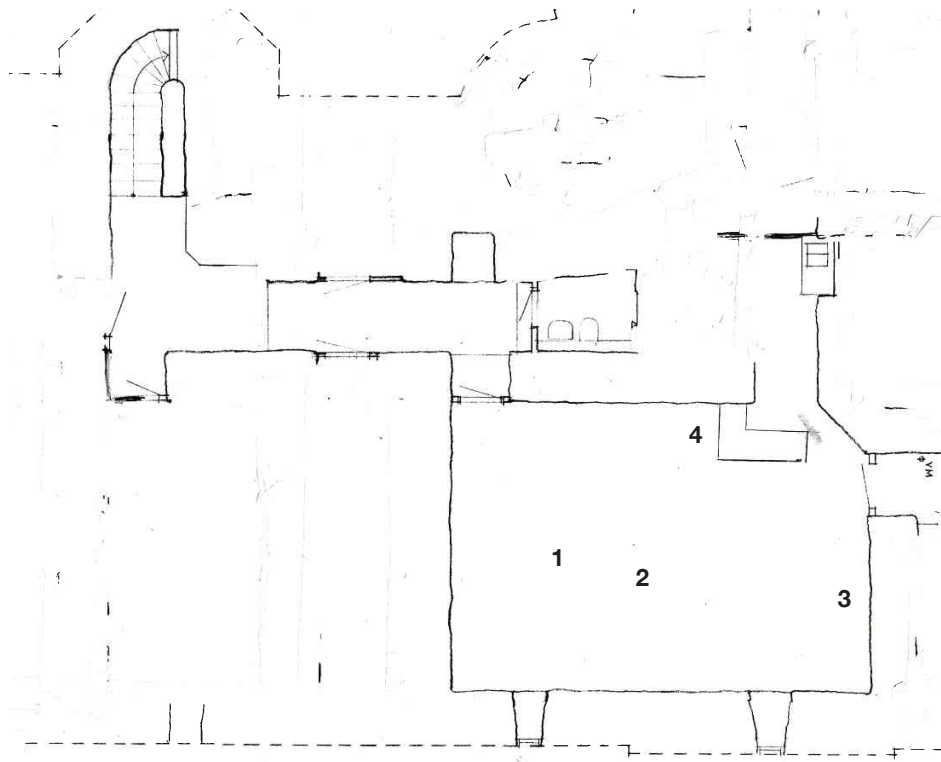
A flying shade of orange peel burning gold, trembling ash leaking, leaking superior
pardoning kindred-ness, barricades offering safety to hands manicuring a floating re-
flection over burning minutes of smoke. Could you contain a sporadic action in a tray,
boiserie shielding vampiric urination.

Fuck your conversational attitude, syntactic paralysis a given?

At the altitude of cones of fossilised coccoliths and foraminifera, sheer white acid
fabric sheets appears to be veiling a steady walk, the view, pointy, formulated at the
threading rhythm of candles burning in the shadow brood and noon lightening, the
sunsets shuttering countering recordings of camera lenses pointing at virgin nightfalls
parades, the chores, the chores.

Was it midday or midnight ?

Was it a blizzard,
was it a safari?



1. Louis Scherfig
Swedish Graze, 2025
 PVC, acrylics, brackets, screws,
 ceramic, wheels, light, cable
 23 x 26 x 24 cm

2. Louis Scherfig
Swedish Craze, 2025
 PVC, acrylics, brackets, screws,
 light, cable, wire
 68 x 12 x 11 cm

3. Mania Godarzani-Bakhtiari
Seafood, 2025
 laser print, passepartout, artist
 built frame
 45 x 33 cm

4. Eli Coplan
Fridge for Cues, 2025
 Thermoelectric refrigeration unit,
 power supply
 21.59 x 10.16 x 15.24 cm; 5.08
 x 19.69 x 11.43 cm

Mania Godarzani Bakhtiari

Mania Godarzani-Bakhtiari (b. 1988, Tehran, Iran) is an interdisciplinary artist living and working in Berlin whose practice interrogates contemporary conditions of (re-)producing art and life. She completed her Meisterschülerin degree with Josephine Pryde at the University of the Arts Berlin in 2023. Her work has been shown in a range of international contexts, including The Wig (Berlin), Treize (Paris), Solutions! (Milan), Etablissement d'en face (Brussels), and Halle für Kunst (Lüneburg), alongside a solo exhibition at W.M.P. (Hamburg). In 2024 she contributed to Texte zur Kunst, received both a research fellowship and the UdK Art Award, and was recently shortlisted for a guest professorship in Fine Art, Media and Education at the University of the Arts Berlin.

Eli Coplan

Eli Coplan (b. 1992, San Diego, USA), who lives and works in New York, studied at Reed College, Portland, and the Independent Study Program at the Whitney Museum of American Art, New York. In 2023 he presented the solo exhibition Disney Plus at Commercial Street, Los Angeles. His recent solo and group exhibitions include Manhattan, Claude Balls Int., New York (2022); Slow Dance, Stadtgalerie, Bern (2023); Quad, a. SQUIRE, London (2024); Eli Coplan, Rachel Fäth, Oto Gillen, Drew Healy, Anna Rubin, b11g, New York (2024); Chadwick Rantanen, Eli Coplan, Hana Miletić, Rachel Fäth, Magenta Plains, New York (2024); Decumanus Maximus, inge, Long Island (2024); and On Television, carriage trade, New York (2024).

Danae Io

Danae Io (b. 1995, Athens, Greece) is a Greek artist working between Brussels and Athens whose practice spans moving image, sculpture, and text, attending to processes and materials that mediate social relations and shape the narrativisation of histories. She has presented solo exhibitions at State of Concept, Athens (2023), and at Akwa Ibom, Athens (2025). She has participated in exhibitions and screenings at UKS, Oslo (2023); the Institute of Contemporary Arts, London (2023); the International Film Festival Rotterdam (2023); Doclisboa (2024); and in 2025 at the New Museum and the DESTE Foundation, Athens, as well as at e-flux Screening Room, New York, and Kunstverein Braunschweig. She is currently a resident at WIELS in Brussels.

Louis Scherfig

Louis Scherfig (b. 1989, Copenhagen, Denmark) is a Danish filmmaker and installation artist whose interdisciplinary practice spans video, sculpture, and performance, exploring narratives of myth, transformation, and human–animal relations. He studied at the Royal Danish Academy of Fine Arts, where he received his MFA in 2018. His work has been shown internationally in both solo and group exhibitions, including One and J. Gallery, Art Sonje Center, Small House, and Local Residence, Seoul, South Korea (2017); Bizarro, Copenhagen, Denmark (2021–2022); Bianca D'Alessandro, Copenhagen, Denmark (2023); and Den Frie, Copenhagen, Denmark (2024).

Peng Zuqiang

Peng Zuqiang (b. 1992, Changsha, China) is a Chinese artist based in Amsterdam. He graduated from Goldsmiths, University of London, in 2014, and from the School of the Art Institute of Chicago in 2017. His fellowships and residencies include The Core Program at the Museum of Fine Arts, Houston, USA (2017–2019); the Skowhegan School of Painting & Sculpture, Maine, USA (2019); Organhaus, Chongqing, China (2021); IAS CEU, Budapest, Hungary (2022); the Rijksakademie, Amsterdam, Netherlands (2022–ongoing); Art Explora – Cité internationale des arts (2024); and the Luma Foundation (2025). He received the Illy Present Future Prize in 2022 and a Special Mention at the Festival Film Dokumenter in Yogyakarta, Indonesia, for his first feature film, Nan (2020). His solo exhibitions and screenings include Hesitations, Antenna Space (ANTENNA-TENNA), Shanghai, China (2021); Souvenirs of Friction, e-flux Screening Room, New York, USA (2022); Sideways Looking, Cell Project Space, London, UK (2022); Vestiges, Fondazione Sandretto Re Rebaudengo, Turin, Italy (2023); Vestiges, Kunstverein Kevin Space, Vienna, Austria (2023); Evidence (duo), Emalin, London, UK (2025); and upcoming presentations at The Common Guild, Glasgow, Scotland (2025), and Rockbund Art Museum, Shanghai, China (2025).

Cecilia Bjartmar Hylta

Cecilia Bjartmar Hylta (b. 1992, Lund, Sweden) is a Swedish artist based between Stockholm and Brussels. She received a BA in Fine Art from Cooper Union, New York, and was a resident at De Ateliers, Amsterdam, from 2019 to 2020. Her work has been presented in major solo and group exhibitions, including Offspring, De Ateliers, Amsterdam, Netherlands (2020); Kunst in Puurs, Puurs, Belgium (2020); Close Alternatives, Milton Avery Graduate School of the Arts, Bard College, New York, USA (2021); Questions for the Cast, Diez Gallery, Amsterdam, Netherlands (2023); Prospects, Van NELLE Fabriek, Rotterdam, Netherlands (2023–2024); Cherry Hill, Cologne, Germany (2024); Galerie Buchholz, New York, USA (2025); and Kunstverein für die Rheinlande und Westfalen, Düsseldorf, Germany (2025).