

Caption and Credit
Sylvia Plimack Mangold: Tape, 1975-1986
January 17 - March 7, 2026



© Sylvia Plimack Mangold
Photo courtesy Krakow Witkin Gallery, Boston.

Sylvia Plimack Mangold

Recycled tracing torn from painting of 36" Rule with Light, 1975

Signed, titled, and dated lower right recto

Acrylic, ink, and graphite on paper

Paper size: 18 1/8 x 24 inches (46 x 61 cm)

Frame size: 22 x 27 3/4 inches (55.9 x 70.5 cm)

(Inventory #39228)



© Sylvia Plimack Mangold
Photo courtesy Krakow Witkin Gallery, Boston.

Sylvia Plimack Mangold

Landscape 1981 (March Sunset), 1981

Signed recto, titled verso

Oil on canvas

12 1/4 x 28 inches (31.1 x 71.1 cm)

(Inventory #39232)



© Sylvia Plimack Mangold
Photo courtesy Krakow Witkin Gallery, Boston.

Sylvia Plimack Mangold

South in the Summer #1 [17] July 1983, 1983

Signed and dated left recto

Pastel on paper

Paper size: 29 x 42 inches (73.7 x 106.7 cm)

Frame size: 37 1/2 x 49 1/2 inches (95.3 x 125.7 cm)

(Inventory #39230)



© Sylvia Plimack Mangold
Photo courtesy Krakow Witkin Gallery, Boston.

Sylvia Plimack Mangold

Untitled, 1980

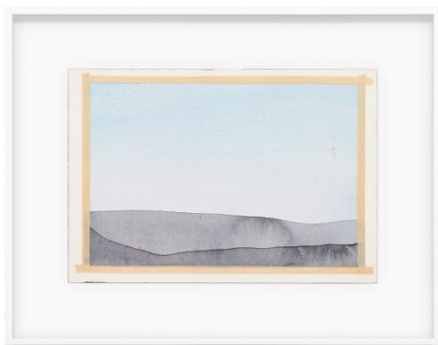
Signed and dated lower right recto

Acrylic and watercolor on paper

Paper size: 9 x 12 1/8 inches (22.9 x 30.8 cm)

Frame size: 12 7/8 x 16 inches (32.7 x 40.6 cm)

(Inventory #37869)



© Sylvia Plimack Mangold
Photo courtesy Krakow Witkin Gallery, Boston.

Sylvia Plimack Mangold

Untitled, 1981 (ca.)

Signed lower verso

Acrylic and watercolor on paper

Paper size: 7 1/4 x 10 1/8 inches (18.4 x 25.7 cm)

Frame size: 11 x 14 1/4 inches (27.9 x 36.2 cm)

(Inventory #37860)



© Sylvia Plimack Mangold
Photo courtesy Krakow Witkin Gallery, Boston.

Sylvia Plimack Mangold

January 21, 1980, 1980

Signed and dated within the image

Oil pastel and acrylic on paper

Paper size: 22 1/2 x 30 1/8 inches (57.1 x 76.5 cm)

Frame size: 26 3/8 x 33 7/8 inches (67 x 86 cm)

(Inventory #37861)



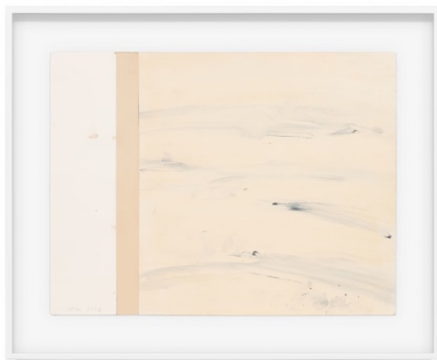
© Sylvia Plimack Mangold
Photo courtesy Krakow Witkin Gallery, Boston.

Sylvia Plimack Mangold
Sunset Study, With Blue, 1980
Signed on verso
Oil on linen
20 x 15 inches (50.8 x 38.1 cm)
(Inventory #35652)



© Sylvia Plimack Mangold
Photo courtesy Krakow Witkin Gallery, Boston.

Sylvia Plimack Mangold
Untitled (from the Inches and Field series), 1978
Signed and dated lower recto, notated "17" below signature
Ink on paper, unique
Image size: 6 x 6 inches (15.2 x 15.2 cm)
Paper size: 7 15/16 x 8 7/8 inches (20.2 x 22.5 cm)
Frame size: 13 1/4 x 13 1/4 inches (33.7 x 33.7 cm)
(Inventory #26654)



© Sylvia Plimack Mangold
Photo courtesy Krakow Witkin Gallery, Boston.

Sylvia Plimack Mangold
Untitled, 1976
Signed and dated lower left recto
Acrylic on paper
Paper size: 12 1/4 x 16 1/8 inches (31.1 x 41 cm)
Frame size: 16 1/8 x 20 inches (41 x 50.8 cm)
(Inventory #37866)



© Sylvia Plimack Mangold
Photo courtesy Krakow Witkin Gallery, Boston.

Sylvia Plimack Mangold

Relationships, 1975 (ca.)

Initialed top right, recto

Acrylic, watercolor, tape, and graphite on paper

Paper size: 12 1/4 x 16 1/8 inches (31.1 x 41 cm)

Frame size: 16 1/8 x 20 inches (41 x 50.8 cm)

(Inventory #37871)



© Sylvia Plimack Mangold
Photo courtesy Krakow Witkin Gallery, Boston.

Sylvia Plimack Mangold

Aquatint, Sugarlift and Golden Changes, 1977

Signed and numbered lower right recto on each sheet

Etching with aquatint on paper, in three parts

Images size (landscape): 8 3/8 x 11 3/8 inches (21.2 x 28.89 cm)

Image size (monochrome & ruler): 3 1/8 x 5 inches (7.9 x 12.7 cm)

Image size (ruler & brushstrokes): 8 1/2 x 8 5/8 inches (21.59 x 21.9 cm)

Paper size (each): 10 7/8 x 13 7/8 inches (27.6 x 35.2 cm)

Frame size (each): 13 1/2 x 16 1/2 inches (34.3 x 41.9 cm)

Edition of 50, AP 12/15

(Inventory #35284)



© Sylvia Plimack Mangold
Photo courtesy Krakow Witkin Gallery, Boston.

Sylvia Plimack Mangold

Paper Under Tape, Paint Over Paper, 1977

Signed and dated lower right, numbered lower left

Etching and aquatint from four plates in olive green, pink, yellow ocher and raw umber

Image size: 14 1/2 x 16 1/4 inches (36.8 x 41.3 cm)

Paper size: 21 7/8 x 30 1/4 inches (55.6 x 76.8 cm)

Frame size: 25 3/4 x 34 1/8 inches (65.4 x 86.7 cm)

Edition of 50, AP 3/15

(Inventory #37330)



© Sylvia Plimack Mangold
Photo courtesy Krakow Witkin Gallery, Boston.

Sylvia Plimack Mangold

Locust Tree Tops, 1986

Signed, dated, and titled verso

Oil on linen

24 x 30 inches (61 x 76 cm)

(Inventory #39234)



© Sylvia Plimack Mangold
Photo courtesy Krakow Witkin Gallery, Boston.

Sylvia Plimack Mangold

Untitled (December 29th, 1985), 1985

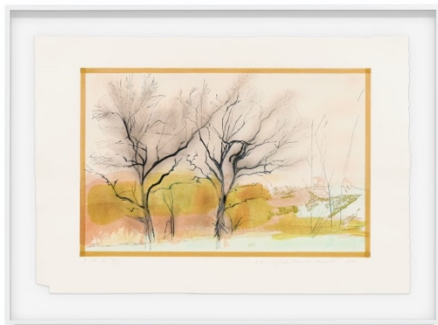
Signed verso "Sylvia Plimack Mangold", dated "12/29/85", and media detailed as "ink, temp[e]ra, acrylic"

Acrylic, egg tempera, and ink on paper, unique

Paper/Image size: 19 1/4 x 23 1/2 inches (48.9 x 59.7 cm)

Frame size: 23 1/2 x 27 3/4 inches (59.7 x 70.5 cm)

(Inventory #36625)



© Sylvia Plimack Mangold
Photo courtesy Krakow Witkin Gallery, Boston.

Sylvia Plimack Mangold

The Nut Trees, 1985

Signed, numbered, and dated lower right recto; titled lower left recto

Color woodcut on paper

Image size: 12 1/8 x 18 3/4 inches (30.8 x 47.6 cm)

Paper size: 20 3/8 x 27 7/8 inches (51.8 x 70.8 cm)

Frame size: 26 x 29 1/4 inches (66 x 74.3 cm)

Edition of 100, AP 5/20

(Inventory #37923)



Sylvia Plimack Mangold

Untitled, 1977 (ca.)

Signed lower right recto

Acrylic on linen

Fabric size: 17 3/4 x 17 1/2 inches (45.1 x 44.5 cm)

Frame size: 21 5/8 x 21 5/8 inches (54.9 x 54.9 cm)

(Inventory #37867)

© Sylvia Plimack Mangold

Photo courtesy Krakow Witkin Gallery, Boston.

KRAKOW WITKIN GALLERY

10 NEWBURY STREET BOSTON MASSACHUSETTS 02116 +1 617 262 4490 WWW.KRAKOWWITKINGALLERY.COM