

The background of the entire image is an abstract painting by Jorge Pardo. It features a dense, intricate pattern of small, overlapping brushstrokes in a variety of colors, including earthy browns, oranges, reds, blues, and greys. The strokes are arranged in a way that creates a sense of movement and depth, with some areas appearing more saturated than others. The overall effect is a complex, textured surface that changes as the viewer's perspective shifts.

Jorge Pardo

October 30, 2025 – December 20, 2025  
520 West 25th Street

Petzel





## Jorge Pardo

October 30, 2025 - December 20, 2025.

Petzel is pleased to present an exhibition of new paintings and lamps by Mérida and New York based artist Jorge Pardo, opening Thursday, October 30, 2025. The show marks Pardo's twelfth solo exhibition with the gallery and will be on view through December 20, 2025, at 520 West 25th Street.





*Untitled*

2025

Oil and metallic paint on canvas,  
stretched over birch and engraved

Framed: 78 3/4 x 78 3/4 x 2 3/8 in

200 x 200 x 6 cm

Unframed: 76 3/4 x 76 3/4 in

194.9 x 194.9 cm

(JP 25/026)





*Untitled*

2025

Oil and metallic paint on canvas,  
stretched over birch and engraved

Framed: 78 3/4 x 78 3/4 x 2 3/8 in

200 x 200 x 6 cm

Unframed: 76 3/4 x 76 3/4 in

194.9 x 194.9 cm

(JP 25/025)





*Untitled*

2025

Flatbed print on PETG 3mm,  
birch, aluminum, stainless steel

3 lamps, each: 35 x 24 x 24 in

88.9 x 61 x 61 cm

(JP 25/030)





*Untitled*

2025

Flatbed print on PETG 3mm,  
birch, aluminum, stainless steel

5 lamps, each: 35 x 24 x 24 in

88.9 x 61 x 61 cm

(JP 25/027)





*Untitled*

2025

Oil and metallic paint on canvas,  
stretched over birch and engraved

Framed: 73 1/4 x 73 1/4 x 2 3/8 in

186 x 186 x 6 cm

Unframed: 71 1/4 x 71 1/4 in

181 x 181 cm

(JP 25/020)









*Untitled*

2025

Oil and metallic paint on canvas,  
stretched over birch and engraved

Framed: 78 3/4 x 78 3/4 x 2 3/8 in

200 x 200 x 6 cm

Unframed: 76 3/4 x 76 3/4 in

194.9 x 194.9 cm

(JP 25/024)





*Untitled*

2025

Oil and metallic paint on canvas,  
stretched over birch and engraved

Framed: 78 3/4 x 78 3/4 x 2 3/8 in

200 x 200 x 6 cm

Unframed: 76 3/4 x 76 3/4 in

194.9 x 194.9 cm

(JP 25/023)



With vibrant paintings, hanging sets of pendants and new floor lamps, Pardo builds upon his interest in fusing machine and hand-made media to create works that are paradoxically bound to conditions of time, memory, and space. Referring to his paintings as “artworks to think with,” Pardo uses a procedural approach he has developed over the past half decade. He overlaps far-spanning art historical sources digitally, which converge and intersect as vertices of light, color, and form to arrive at final images through a process of estrangement and dissociation. This allows him to forge unexpected affinities between seemingly disparate works, starting with the entirety of Monet’s *Haystacks* and intersecting them with the interventions of conceptually-informed artists like Michael Asher. With the digital drawing complete, vectorized outlines are laser-etched on to canvas and hand-painted with an effervescent palette of marigold yellows, pearlescent blues, and mossy greens.

Similarly, Pardo’s hanging pendants and floor lamps draw upon both Monet’s *Haystacks* and Warhol’s *Shadows*. Armed with architectural software, the artist machines these mythical lighting effects so tangled in art historical discourse. The resulting lightworks slice, abstract and restructure the interior light of Monet and the exterior saturation of Warhol’s shadows onto laser-cut planes of painted acrylic sheeting. For the floor lamps, Pardo has used over 50 *Shadow* paintings as his palette assigning colors to each lamp. Unique, organic shapes emerge from the floor through acrylic that the artist warps with heat.







*Untitled*  
2025  
PETG 3mm, birch, dżalam,  
aluminum, stainless steel  
40 1/2 x 25 x 25 in  
102.9 x 63.5 x 63.5 cm  
(JP 25/035)





*Untitled*  
 2025  
 PETG 3mm, birch, dzalam,  
 aluminum, stainless steel  
 39 1/2 x 26 1/2 x 26 1/2 in  
 100.3 x 67.3 x 67.3 cm  
 (JP 25/047)



*Untitled*  
 2025  
 PETG 3mm, birch, dzalam,  
 aluminum, stainless steel  
 39 x 24 x 24 in  
 99.1 x 61 x 61 cm  
 (JP 25/042)



*Untitled*  
 2025  
 PETG 3mm, birch, dzalam,  
 aluminum, stainless steel  
 40 x 25 1/4 x 25 1/4 in  
 101.6 x 64.1 x 64.1 cm  
 (JP 25/048)





*Untitled*

2025

Oil and metallic paint on canvas,  
stretched over birch and engraved

Framed: 78 3/4 x 78 3/4 x 2 3/8 in

200 x 200 x 6 cm

Unframed: 76 3/4 x 76 3/4 in

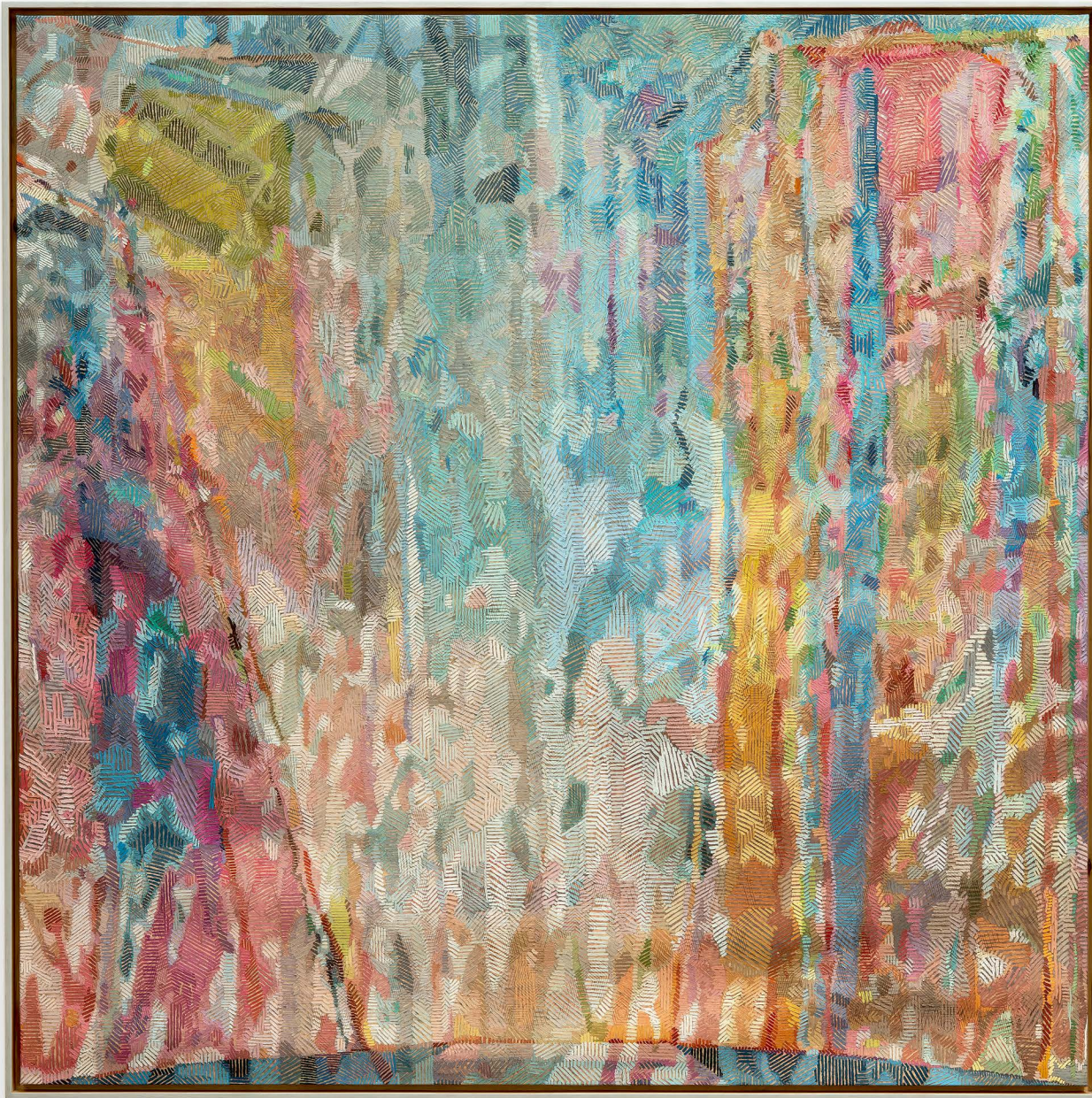
194.9 x 194.9 cm

(JP 25/022)









*Untitled*

2025

Oil and metallic paint on canvas,  
stretched over birch and engraved

Framed: 73 1/4 x 73 1/4 x 2 3/8 in

186 x 186 x 6 cm

Unframed: 71 1/4 x 71 1/4 in

181 x 181 cm

(JP 25/021)





*Untitled*

2025

Oil and metallic paint on canvas,  
stretched over birch and engraved

Framed: 73 1/4 x 73 1/4 x 2 3/8 in

186 x 186 x 6 cm

Unframed: 71 1/4 x 71 1/4 in

181 x 181 cm

(JP 25/019)





*Untitled*

2025

Flatbed print on PETG 3mm,  
birch, aluminum, stainless steel

5 lamps, each: 35 x 24 x 24 in

88.9 x 61 x 61 cm

(JP 25/028)





*Untitled*

2025

Flatbed print on PETG 3mm,  
birch, aluminum, stainless steel

3 lamps, each: 35 x 24 x 24 in

88.9 x 61 x 61 cm

(JP 25/032)





*Untitled*

2025

Flatbed print on PETG 3mm,  
birch, aluminum, stainless steel

5 lamps, each: 35 x 24 x 24 in

88.9 x 61 x 61 cm

(JP 25/029)





*Untitled*

2025

Oil and metallic paint on canvas,  
stretched over birch and engraved

Framed: 73 1/4 x 73 1/4 x 2 3/8 in

186 x 186 x 6 cm

Unframed: 71 1/4 x 71 1/4 in

181 x 181 cm

(JP 25/017)









*Untitled*  
2025  
PETG 3mm, birch, dżalam,  
aluminum, stainless steel  
39 x 25 x 25 in  
99.1 x 63.5 x 63.5 cm  
(JP 25/039)





*Untitled*  
2025  
PETG 3mm, birch, dżalam,  
aluminum, stainless steel  
39 3/4 x 24 x 24 in  
101 x 61 x 61 cm  
(JP 25/034)





*Untitled*

2025

Oil and metallic paint on canvas,  
stretched over birch and engraved

Framed: 73 1/4 x 73 1/4 x 2 3/8 in

186 x 186 x 6 cm

Unframed: 71 1/4 x 71 1/4 in

181 x 181 cm

(JP 25/018)





*Untitled*  
2025  
PETG 3mm, birch, dzalam,  
aluminum, stainless steel  
39 x 25 x 25 in  
99.1 x 63.5 x 63.5 cm  
(JP 25/039)



*Untitled*  
2025  
PETG 3mm, birch, dzalam,  
aluminum, stainless steel  
40 x 24 x 24 in  
101.6 x 61 x 61 cm  
(JP 25/040)



*Untitled*  
2025  
PETG 3mm, birch, dzalam,  
aluminum, stainless steel  
38 3/4 x 25 1/4 x 25 1/4 in  
98.4 x 64.1 x 64.1 cm  
(JP 25/038)





*Untitled*

2025

Flatbed print on PETG 3mm,  
birch, aluminum, stainless steel

3 lamps, each: 35 x 24 x 24 in

88.9 x 61 x 61 cm

(JP 25/031)





## About Jorge Pardo

Jorge Pardo (b. 1963, Havana, Cuba) studied at the University of Illinois, Chicago, and received his BFA from Art Center College of Design in Pasadena, California. In 2024, he was named the Landcraft Garden Foundation's Sculpture in the Garden artist.

His work has been the subject of solo exhibitions including SCAD Museum of Art, Savannah, (2023); Museum of Art & Design, Miami (2021); Pinacoteca de Estado São Paulo, São Paulo (2019); Musée des Augustins, Toulouse (2014); Irish Museum of Modern Art, Dublin (2010); K21 Kunstsammlung Nordrhein-Westfalen, Düsseldorf (2009); Los Angeles County Museum of Art (2008); and Museum of Contemporary Art, Miami (2007). Paintings by the artist were included in the 57th Venice Biennale (2017).

His work is part of numerous public collections including the Centre Pompidou, Paris; Tate Modern, London; Museum of Contemporary Art, Los Angeles; Museum of Contemporary Art, Chicago; Boijmans van Beuningen Museum, Rotterdam; Museum of Contemporary Art, Miami; Museum of Modern Art, New York, and the Whitney Museum of American Art, New York.

Jorge Pardo has been the recipient of many awards including the MacArthur Fellowship Award (2010); the Smithsonian American Art Museum Lucelia Artist Award (2001); and the Louis Comfort Tiffany Foundation Award (1995).

Jorge Pardo currently lives and works between Mérida, Mexico and New York, NY.