

Tara Downs    424 Broadway 3F NY 10013    [office@taradowns.com](mailto:office@taradowns.com)

YIRUI FANG

2026

Exhibition Checklist



Exhibition view of Yirui Fang, *Even when the gods lose their will, the afterglow remains*, 2026  
Tara Downs, New York  
Image courtesy of the artist and Tara Downs, New York. Photo: Max C Lee.



YIRUI FANG

*Warm 2*, 2025

Oil on canvas

18 1/2 × 39 in / 47 × 99,1 cm

Image courtesy of the artist and Tara Downs, New York.





YIRUI FANG

*Warm 2*, 2025 (detail)

Oil on canvas

18 1/2 × 39 in / 47 × 99,1 cm

Image courtesy of the artist and Tara Downs, New York.





Exhibition view of Yirui Fang, *Even when the gods lose their will, the afterglow remains*, 2026  
Tara Downs, New York  
Image courtesy of the artist and Tara Downs, New York. Photo: Max C Lee.



YIRUI FANG

*If you see a faint light, please walk towards it, 2025*

Oil on canvas

28 1/4 × 28 1/4 in / 71,8 × 71,8 cm

Image courtesy of the artist and Tara Downs, New York.





YIRUI FANG

*If you see a faint light, please walk towards it*, 2025 (detail)

Oil on canvas

28 1/4 × 28 1/4 in / 71,8 × 71,8 cm

Image courtesy of the artist and Tara Downs, New York.





Exhibition view of Yirui Fang, *Even when the gods lose their will, the afterglow remains*, 2026  
Tara Downs, New York  
Image courtesy of the artist and Tara Downs, New York. Photo: Max C Lee.





YIRUI FANG  
*Warm*, 2025  
Oil on canvas  
34 × 27 in / 86,4 × 68,6 cm  
Image courtesy of the artist and Tara Downs, New York.





YIRUI FANG

*Warm*, 2025 (detail)

Oil on canvas

34 × 27 in / 86,4 × 68,6 cm

Image courtesy of the artist and Tara Downs, New York.





Exhibition view of Yirui Fang, *Even when the gods lose their will, the afterglow remains*, 2026  
Tara Downs, New York  
Image courtesy of the artist and Tara Downs, New York. Photo: Max C Lee.





YIRUI FANG

*The Last Myth, the First Light*, 2025

Oil on canvas

79 <sup>1</sup>/<sub>4</sub> × 54 <sup>1</sup>/<sub>4</sub> in / 201,3 × 137,8 cm

Image courtesy of the artist and Tara Downs, New York.





YIRUI FANG

*The Last Myth, the First Light*, 2025 (detail)

Oil on canvas

79 <sup>1</sup>/<sub>4</sub> × 54 <sup>1</sup>/<sub>4</sub> in / 201,3 × 137,8 cm

Image courtesy of the artist and Tara Downs, New York.





Exhibition view of Yirui Fang, *Even when the gods lose their will, the afterglow remains*, 2026  
Tara Downs, New York  
Image courtesy of the artist and Tara Downs, New York. Photo: Max C Lee.





YIRUI FANG

*A second ray of dawn in the ashes, 2025*

Oil on canvas

77 × 58 <sup>1</sup>/<sub>4</sub> in / 195,6 × 148 cm

Image courtesy of the artist and Tara Downs, New York.





YIRUI FANG

*A second ray of dawn in the ashes, 2025 (detail)*

Oil on canvas

77 × 58 1/4 in / 195,6 × 148 cm

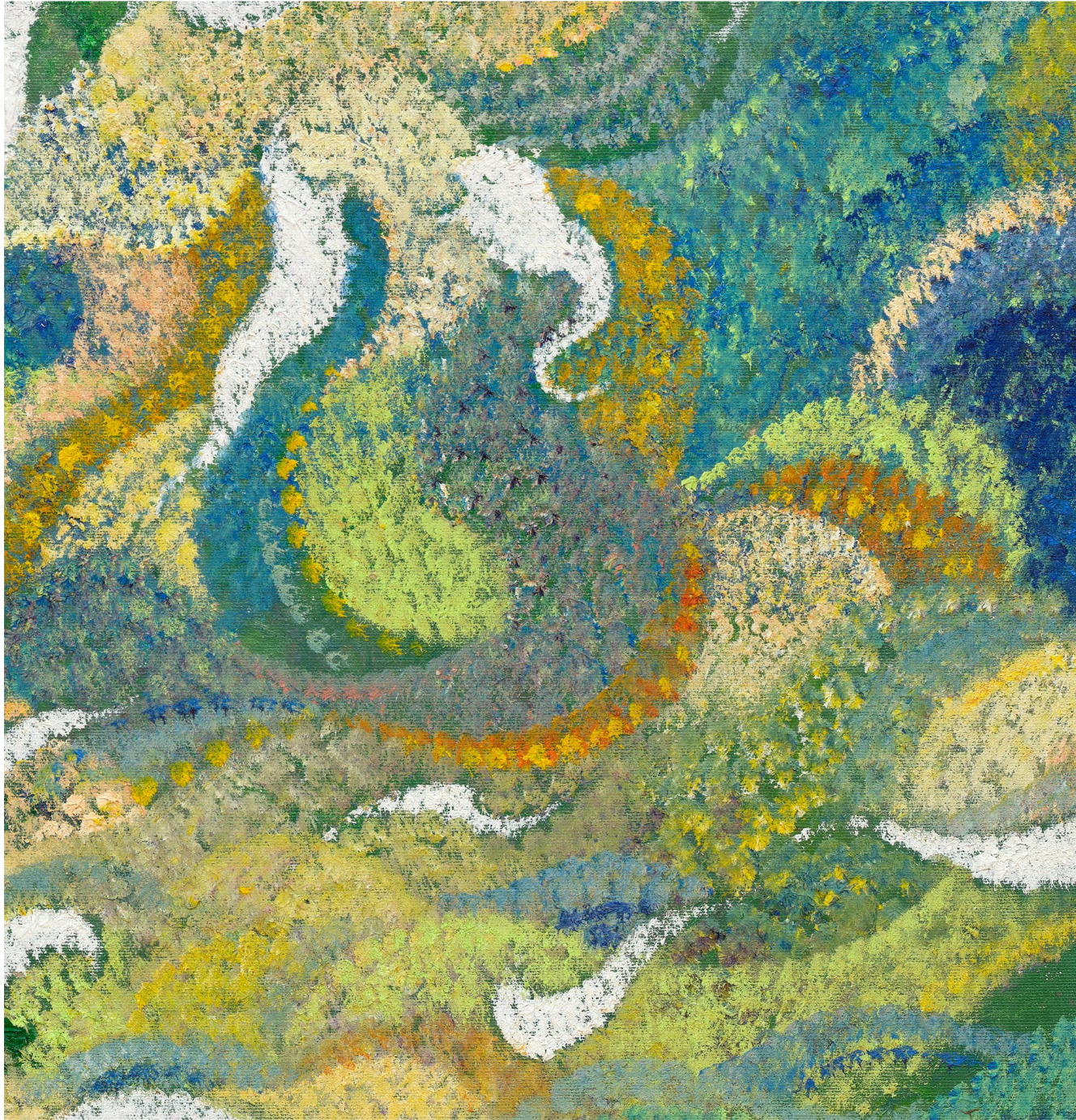
Image courtesy of the artist and Tara Downs, New York.





YIRUI FANG  
*Waves*, 2025  
Oil on canvas  
36 × 25 in / 91,4 × 63,5 cm  
Image courtesy of the artist and Tara Downs, New York.





YIRUI FANG

*Waves*, 2025 (detail)

Oil on canvas

36 × 25 in / 91,4 × 63,5 cm

Image courtesy of the artist and Tara Downs, New York.





Exhibition view of Yirui Fang, *Even when the gods lose their will, the afterglow remains*, 2026  
Tara Downs, New York  
Image courtesy of the artist and Tara Downs, New York. Photo: Max C Lee.





YIRUI FANG

*When the gods sleep, the world shines through the cracks, 2025*

Oil on canvas

60 <sup>1</sup>/<sub>4</sub> × 78 <sup>3</sup>/<sub>4</sub> in / 153 × 200 cm

Image courtesy of the artist and Tara Downs, New York.





YIRUI FANG  
*When the gods sleep, the world shines through the cracks*, 2025 (detail)  
Oil on canvas  
60 <sup>1</sup>/<sub>4</sub> × 78 <sup>3</sup>/<sub>4</sub> in / 153 × 200 cm  
Image courtesy of the artist and Tara Downs, New York.





Exhibition view of Yirui Fang, *Even when the gods lose their will, the afterglow remains*, 2026  
Tara Downs, New York  
Image courtesy of the artist and Tara Downs, New York. Photo: Max C Lee.





YIRUI FANG

*Ruins of Light 2*, 2025

Oil on canvas

29 1/2 × 27 1/4 in / 74,9 × 69,2 cm

Image courtesy of the artist and Tara Downs, New York.





YIRUI FANG  
*Ruins of Light 2*, 2025 (detail)  
Oil on canvas  
29 1/2 × 27 1/4 in / 74,9 × 69,2 cm  
Image courtesy of the artist and Tara Downs, New York.





YIRUI FANG  
*Sparks remaining in the wind*, 2025  
Oil on canvas  
31 <sup>1</sup>/<sub>4</sub> × 28 in / 79,4 × 71,1 cm  
Image courtesy of the artist and Tara Downs, New York.





YIRUI FANG

*Sparks remaining in the wind*, 2025 (detail)

Oil on canvas

31 1/4 × 28 in / 79,4 × 71,1 cm

Image courtesy of the artist and Tara Downs, New York.





Exhibition view of Yirui Fang, *Even when the gods lose their will, the afterglow remains*, 2026  
Tara Downs, New York  
Image courtesy of the artist and Tara Downs, New York. Photo: Max C Lee.





YIRUI FANG

*The lamplighter in the dark, 2025*

Oil on canvas

78 <sup>3</sup>/<sub>4</sub> × 49 <sup>1</sup>/<sub>2</sub> in / 200 × 126 cm

Image courtesy of the artist and Tara Downs, New York.





YIRUI FANG

*The lamplighter in the dark, 2025 (detail)*

Oil on canvas

78 <sup>3</sup>/<sub>4</sub> × 49 <sup>1</sup>/<sub>2</sub> in / 200 × 126 cm

Image courtesy of the artist and Tara Downs, New York.





Exhibition view of Yirui Fang, *Even when the gods lose their will, the afterglow remains*, 2026  
Tara Downs, New York  
Image courtesy of the artist and Tara Downs, New York. Photo: Max C Lee.





Exhibition view of Yirui Fang, *Even when the gods lose their will, the afterglow remains*, 2026  
Tara Downs, New York  
Image courtesy of the artist and Tara Downs, New York. Photo: Max C Lee.





YIRUI FANG

*Ruins of Light*, 2025

Oil on canvas

56 1/2 × 31 1/2 in / 143,5 × 80 cm

Image courtesy of the artist and Tara Downs, New York.





YIRUI FANG

*Ruins of Light*, 2025 (detail)

Oil on canvas

56 1/2 × 31 1/2 in / 143,5 × 80 cm

Image courtesy of the artist and Tara Downs, New York.





Exhibition view of Yirui Fang, *Even when the gods lose their will, the afterglow remains*, 2026  
Tara Downs, New York  
Image courtesy of the artist and Tara Downs, New York. Photo: Max C Lee.