

Crèveœur



27 - Exhibition view, Yu Nishimura, *Threshold*, 2025-2026, Crèveœur, Paris.
Courtesy of the artist and Crèveœur, Paris. Photo: Martin Argyroglo

Crèveœur



28 - Exhibition view, Yu Nishimura, *Threshold*, 2025-2026, Crèveœur, Paris.
Courtesy of the artist and Crèveœur, Paris. Photo: Martin Argyroglou

Crèveœur



29 - Exhibition view, Yu Nishimura, *Threshold*, 2025-2026, Crèveœur, Paris.
Courtesy of the artist and Crèveœur, Paris. Photo: Martin Argyroglo

Crèveœur



30 - *summer shore*, 2023, watercolor on cardboard, 29.5 × 21 cm.
Courtesy of the artist and Crèveœur, Paris. Photo: Laurent Edeline

Crèveœur



31 - Exhibition view, Yu Nishimura, *Threshold*, 2025-2026, Crèveœur, Paris.
Courtesy of the artist and Crèveœur, Paris. Photo: Martin Argyroglo

Crèveœur



32 - 27, 2025, pastel on paper, 31 × 23.5 cm.
Courtesy of the artist and Crèveœur, Paris. Photo: Laurent Edeline

Crèveœur



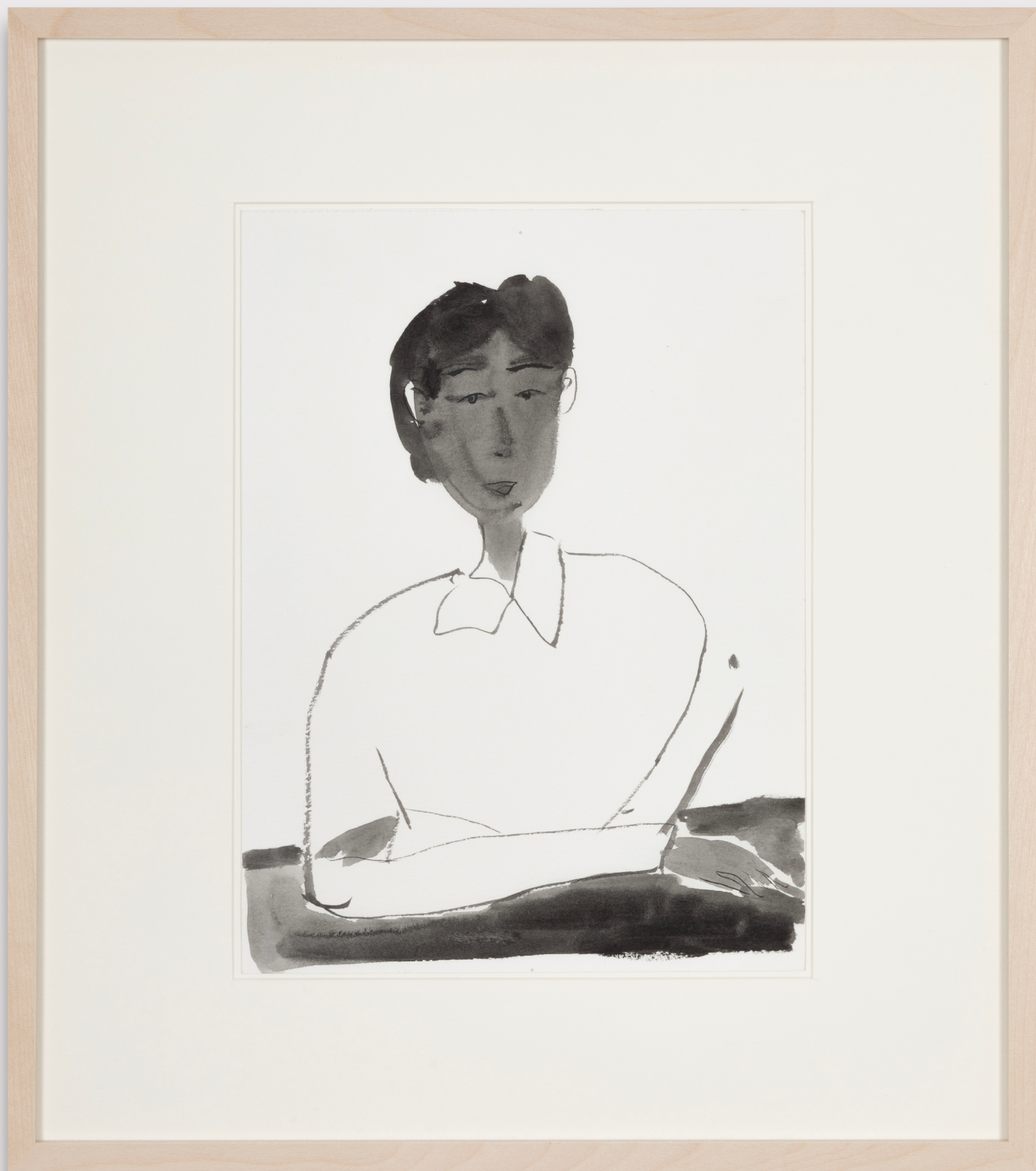
33 - Exhibition view, Yu Nishimura, *Threshold*, 2025-2026, Crèveœur, Paris.
Courtesy of the artist and Crèveœur, Paris. Photo: Martin Argyroglo

Crèveœur



34 - Exhibition view, Yu Nishimura, *Threshold*, 2025-2026, Crèveœur, Paris.
Courtesy of the artist and Crèveœur, Paris. Photo: Martin Argyroglo

Crèveœur



35 - *a boy*, 2023, watercolor on paper, 28 × 21 cm.
Courtesy of the artist and Crèveœur, Paris. Photo: Laurent Edeline



36 - Exhibition view, Yu Nishimura, *Threshold*, 2025-2026, Crèveœur, Paris.
Courtesy of the artist and Crèveœur, Paris. Photo: Martin Argyroglo



37 - Exhibition view, Yu Nishimura, *Threshold*, 2025-2026, Crève-cœur, Paris.
Courtesy of the artist and Crève-cœur, Paris. Photo: Martin Argyroglo

Crèveœur



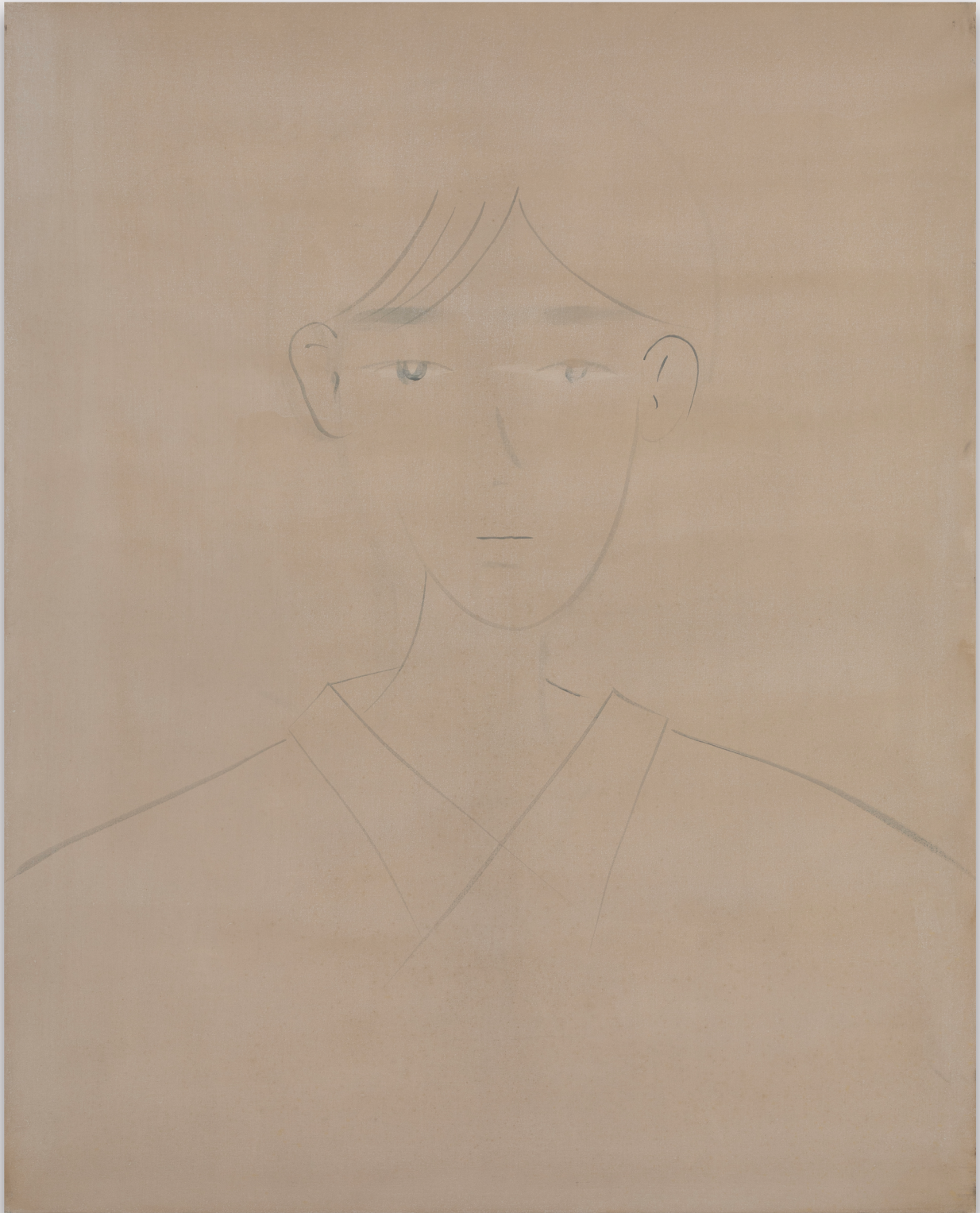
38 - offering, 2025, acrylic on coton, 194 × 371.5 cm (diptych)
Courtesy of the artist and Crèveœur, Paris. Photo: Martin Argyroglo

Crèveœur



39 - Exhibition view, Yu Nishimura, *Threshold*, 2025-2026, Crèveœur, Paris.
Courtesy of the artist and Crèveœur, Paris. Photo: Martin Argyroglo

Crèveœur



40 - *projection*, 2025, tempera on linen, 100 × 80 cm.
Courtesy of the artist and Crèveœur, Paris. Photo: Laurent Edeline

Crèveœur



41 - Exhibition view, Yu Nishimura, *Threshold*, 2025-2026, Crèveœur, Paris.
Courtesy of the artist and Crèveœur, Paris. Photo: Martin Argyroglo

Crèveœur



42 - Exhibition view, Yu Nishimura, *Threshold*, 2025-2026, Crèveœur, Paris.
Courtesy of the artist and Crèveœur, Paris. Photo: Martin Argyroglo

Crèveœur



43 - fruits and porcelain, 2024, acrylic and oil on canvas, 32 × 41 cm
Courtesy of the artist and Crèveœur, Paris. Photo: Laurent Edeline

Crèveœur



44 - Exhibition view, Yu Nishimura, *Threshold*, 2025-2026, Crèveœur, Paris.
Courtesy of the artist and Crèveœur, Paris. Photo: Martin Argyroglo

Crèveœur



45 - Yu Nishimura & Yasuaki Hamada, portrait, 2025, acrylic and colored pencil on cardboard mounted on waxed wood with stainless steel, 32 × 41 cm
Courtesy of the artist and Crèveœur, Paris. Photo: Laurent Edeline

Crèveœur



46 - pomme de terre, 2024, oil on canvas, 18 × 14 cm
Courtesy of the artist and Crèveœur, Paris. Photo: Laurent Edeline

Crèveœur



47 - Exhibition view, Yu Nishimura, *Threshold*, 2025-2026, Crèveœur, Paris.
Courtesy of the artist and Crèveœur, Paris. Photo: Martin Argyroglo

Crèveœur



48 - Exhibition view, Yu Nishimura, *Threshold*, 2025-2026, Crèveœur, Paris.
Courtesy of the artist and Crèveœur, Paris. Photo: Martin Argyroglo

Crèveœur



49 - two boys, 2024, oil on canvas, 73 × 91 cm

Courtesy of the artist and Crèveœur, Paris. Photo: Laurent Edeline



50 - Exhibition view, Yu Nishimura, *Threshold*, 2025-2026, Crèveœur, Paris.
Courtesy of the artist and Crèveœur, Paris. Photo: Martin Argyroglo

Crèveœur



51 - *a boy waiting*, 2025, oil on canvas, 194 × 130 cm.
Courtesy of the artist and Crèveœur, Paris. Photo: Laurent Edeline



Crèveœur



53 - messenger, 2022, oil on canvas, 97 × 130 cm
Courtesy of the artist and Crèveœur, Paris. Photo: Laurent Edeline



54 -Portrait of Yu Nishimura
Courtesy of the artist and Crèveœur, Paris. Photo: Takashi Homma