

Reverse Global Warming

GLOBAL FEED

17 July - 11 September 2004

Preview: Friday 16 July 6 - 8pm



GLOBAL FEED is a collaboration of Ocean Earth Development Corporation and the Plymouth Marine Sciences Partnership, developed through an Arts Council England / Arts and Humanities Research Board 'Science and Art' Research Fellowship at the Institute of Digital Art and Technology, University of Plymouth, awarded to Peter Fend.

Image:
Parts 1-4 of the 15 part
GLOBAL FEED



Exeter City Council

Spacex is financially assisted by Arts Council England
Exeter City Council and Devon County Council



Plymouth Marine Sciences Partnership

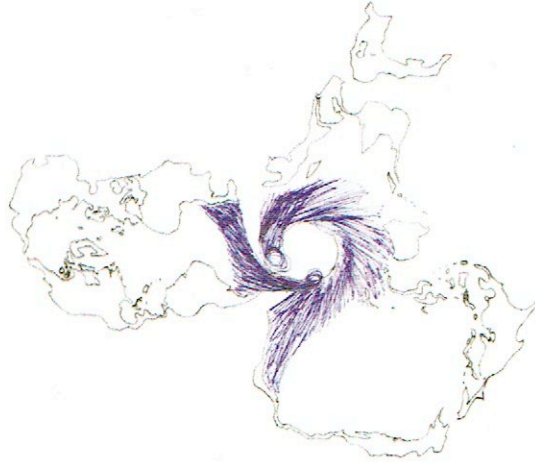
A · H · R · B
arts and humanities research board

SPACEX

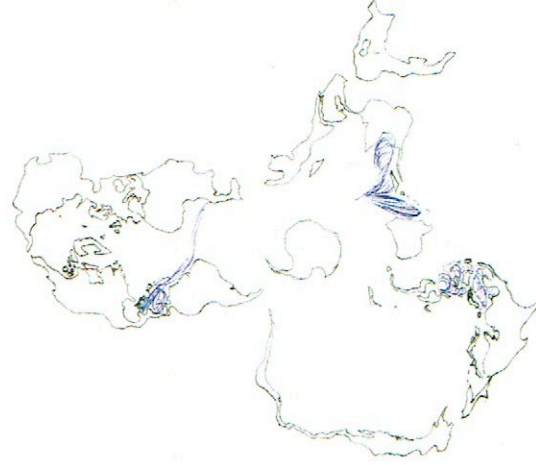
Gallery opening hours
Tuesday to Saturday, 10am to 5pm

Admission free

Spacex Gallery
45 Preston Street
Exeter EX1 1DF, UK
T: +44 (0)1392 431786
F: +44 (0)1392 213786
mail@spacex.co.uk
www.spacex.co.uk



1
MAN APPROX 100 AD. 1 + 2 BARRS OF THE WORLD
AMAZON (412) + GAMES (35) 3



2 THE WEST MOVES AND TO EAST MOVIES
AND SEALED

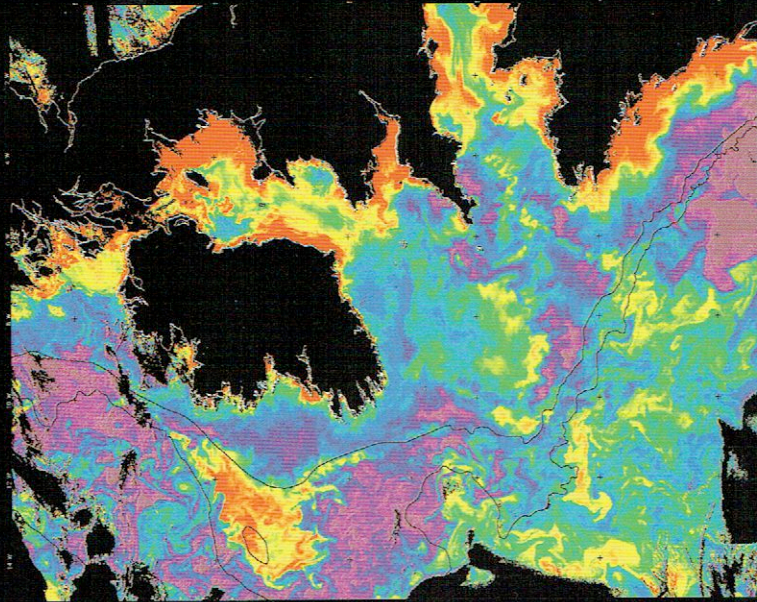


3
RETURN FROM AMERICAN REASONS
TO ANTARCTICA 4



4
STILL COME TO THE SOUTH, EVEN IN THE NORTH

REVERSE GLOBAL WARMING



Courtesy: Dr Samantha Lavender, University of Plymouth

Global Feed

17 July - 11 September

As the newspapers have been repeating, climate change is the most severe problem that we are facing today, more serious even than the threat of terrorism. *Global Feed's* response is that climate change is not a *fait accompli*. It is not good enough just to recognise global warming, it must be reversed. This exhibition attempts to show how.

Global Feed is the outcome of an Arts Council England / Arts and Humanities Research Board *Science and Art Research Fellowship*, awarded to Peter Fend. Scientists in Plymouth and Exeter have worked in collaboration with a team of artists and architects from New York who founded *Ocean Earth Development Corporation*.

1. REVERSE GLOBAL WARMING

Map the world according to its ocean basins (Indian, Atlantic, Pacific) as they spread around Antarctica, making the South Pole the centre.

Use *Global Feed* imaging to search out trouble spots and renewable resources, such as nutrient-rich upwellings.

Map each catchment for each bay, each stretch of coastline, within each regional sea, and establish a satellite-based ecological-depletion tax which, pixel by pixel, presses land users to conserve rather than waste the biosphere.

Identify surplus run-off into the ocean, bay by bay, basin by basin, and employ new water-based technologies by which coastal peoples can extract renewable, clean sources of energy.

With a cadre of scientist, artists and architects, look for places where excess biological wealth, a natural surplus, allows for the year-in year-out harvest of whatever we need to thrive — without reliance on mineral fuels.

2. PENINSULAR CAMPAIGN — MODEL FOR THE EU
The South West, being a peninsular, can be a model for the EU, also a peninsular. Architectural standards can then be applied to the South West and EU lands, namely to assure 1) clean air, 2) clean water, 3) circulatory space, and 4) defence.

Peter Fend



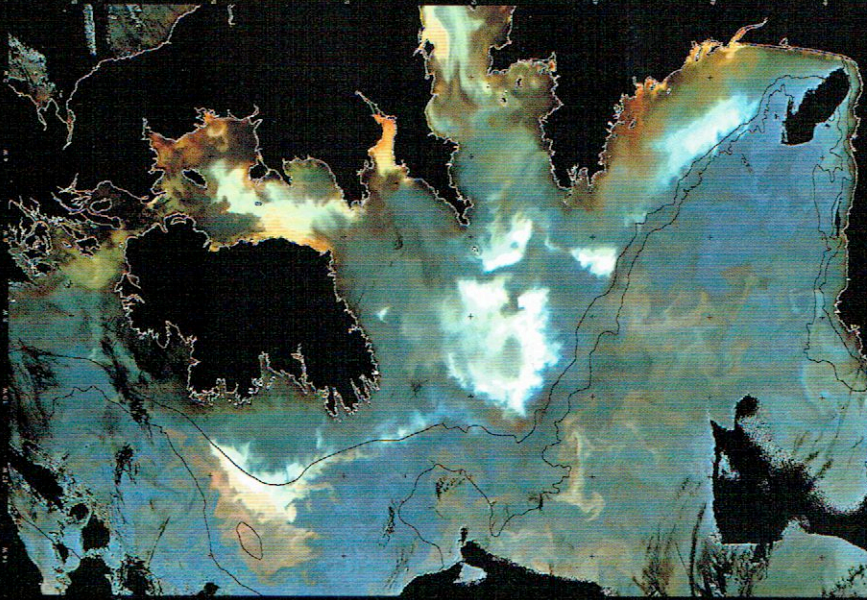
G A L L E R Y T A L K

Peter Fend and Tom Trevor in conversation

Tuesday 27 July, 2.30pm

Can artists effect timely historical change. Is art history in the way?

SPACE



Summer 2004