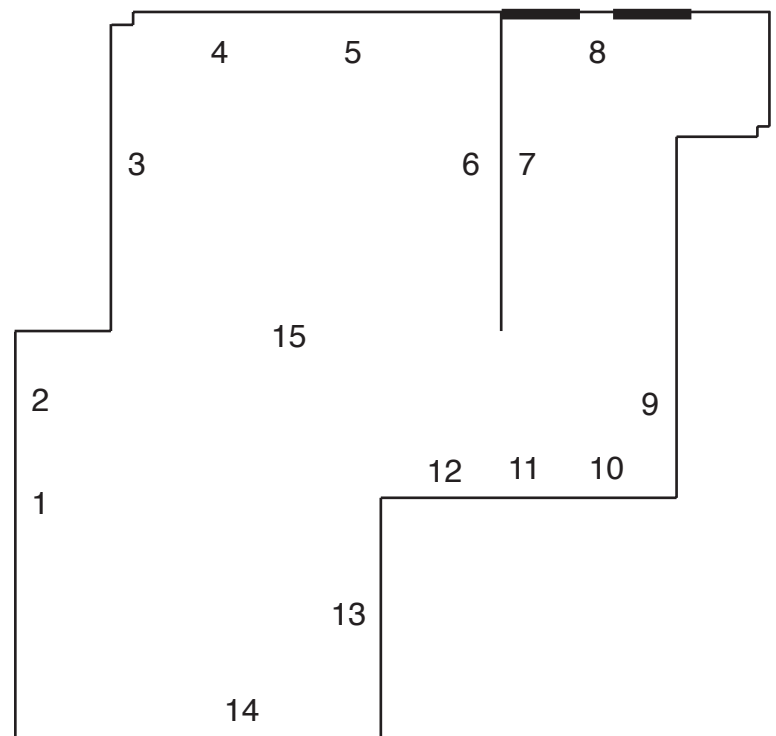


Hanna Hur

**Signal at the Wheel, Hover at the Gate**

June 7 - July 20, 2019



1 *Signal*, 2019  
China marker and colored pencil on linen  
48 x 36 in (121.9 x 91.4 cm)

2 *The Gate*, 2019  
China marker and colored pencil on linen  
48 x 36 in (121.9 x 91.4 cm)

3 *Three Mudangs at Ahasan Mountain*, 2019  
China marker and colored pencil on linen  
30 x 40 in (76.2 x 101.6 cm)

4 *Through ii*, 2014-2018  
watercolor, oil, graphite and colored pencil on  
linen  
20 x 16 in (50.8 x 40.6 cm)

5 *The Wheel*, 2019  
colored pencil on silk  
48 x 36 in (121.9 x 91.4 cm)

6 *Signal ii*, 2017-2019  
watercolor, China marker and colored pencil on  
linen  
30 x 40 in (76.2 x 101.6 cm)

7 *Hover ii*, 2019  
colored pencil on paper  
10 x 13 in (25.4 x 33 cm)

8 *Mother ix*, 2019  
graphite and colored pencil on paper  
9 3/4 x 12 1/2 in (24.8 x 31.8 cm)

9 *The Gate ii*, 2019  
colored pencil on canvas  
79 x 67 in (200.7 x 170.2 cm)

10 *Ritual of Ancestors*, 2018  
colored pencil on paper  
11 x 13 in (27.9 x 33 cm)

11 *Mother viii*, 2019  
colored pencil on paper  
13 1/2 x 10 1/2 in (34.3 x 26.7 cm)

12 *The Gate iv*, 2019  
colored pencil on paper  
12 x 9 in (30.5 x 22.9 cm)

13 *Moonbather (after Laurie)*, 2018  
colored pencil on silk  
30 x 40 in (76.2 x 101.6 cm)

14 *Through*, 2014-2018  
watercolor, oil, graphite and colored pencil on  
linen  
20 x 16 in (50.8 x 40.6 cm)

15 *The Gate*, 2014-2019  
hand cut and shaped copper, clay  
97 x 84 in (246.4 x 213.4 cm)

in the corners:

*Mother iii*, 2017-2019  
hand cut and shaped copper  
variable dimensions